

From: [Deibert, Pat](#)
To: [Jeff Berglund](#); [Jodi Bush](#)
Cc: [Matt Kales](#); [Michael Thabault](#)
Subject: Fwd: Sagebrush Focus Area (for now)
Date: Tuesday, January 06, 2015 12:19:49 PM
Attachments: [North Central Montana GRSG Preliminary Sagebrush Focus Areas Dec 2014 11x17.pdf](#)

Hi Jeff and Jodi -

I got this from the acting BLM coordinator for the RM area. He was told that local BLM was working this through with all of you but wasn't certain John was able to get to it before he left.

A little background - BLM was very concerned that our original stronghold maps contained areas of non-habitat and non-federal ownership, and extended outside of PACs. Most of that were GIS errors - or rather differences in base data - and BLM asked us to correct the base maps. That didn't happen for a variety of reasons so BLM has taken the initiative to do so (which is fine). But it sounds like they are taking it a step further based on the following e-mail trail.

The strongholds are limited to Federal ownership (not just BLM) and beyond errors in GIS analyses we really cannot change them.

Please let me know if you are involved in this effort and any summary of where it stands. My apologies - again - for the additional ask.

pat

----- Forwarded message -----

From: **Magaletti, Matthew** <mmagalet@blm.gov>
Date: Tue, Jan 6, 2015 at 11:03 AM
Subject: Fwd: Sagebrush Focus Area (for now)
To: Pat Deibert <pat_deibert@fws.gov>

Here ya go!

----- Forwarded message -----

From: **Carman, Stephanie** <scarman@blm.gov>
Date: Tue, Dec 30, 2014 at 10:37 AM
Subject: Fwd: Sagebrush Focus Area (for now)
To: Edwin Roberson <eroberso@blm.gov>, Stephen Small <ssmall@blm.gov>, Joseph Stout <j2stout@blm.gov>, Vicki Herren <vherren@blm.gov>, Michael Hildner <mhildner@blm.gov>, Matthew Magaletti <mmagalet@blm.gov>

Proposed Sagebrush Focus Area boundary changes in MT.

Stephanie Carman
Bureau of Land Management
Sage-Grouse Project Coordinator (Acting)

office 202-208-3408
mobile 202-380-7421
scarman@blm.gov

----- Forwarded message -----

From: **Carlson, John** <jccarlso@blm.gov>
Date: Tue, Dec 30, 2014 at 12:10 PM
Subject: Sagebrush Focus Area (for now)
To: "Brooks, Sandra S" <ssleach@blm.gov>, Jamie Connell <jconnell@blm.gov>, Stephanie Carman <scarman@blm.gov>
Cc: Ruth Miller <ramiller@blm.gov>, Jake Chaffin <jlchaffi@blm.gov>, Randall Schardt <rschardt@blm.gov>

Hello all,

Attached is a map for the BLM proposed Sagebrush Focus Area in MT.

This map was built using the FWS provided data layer from their mapping exercise with modifications based on BLM land parcel continuity, size and location to achieve an area that can better provide sage-grouse conservation certainty on BLM lands at a scale that matters to GRSG.

The parcels removed from the data provided as a starting point by the USFWS were generally peripheral, small and isolated parcels where changes in BLM management actions would not necessarily provide conservation gains to sage-grouse due to current and ongoing changes to habitat on the interstitial lands (in particular the areas south of the Missouri River have high levels of current impairment from agricultural conversion and human disturbance (J. Smith pers. comm)). All are within PHMA already identified.

John C. Carlson
Conservation Biologist
Bureau of Land Management
Montana/Dakotas State Office
5001 Southgate Drive
Billings, MT 59101-4669
(406) 896-5024

--

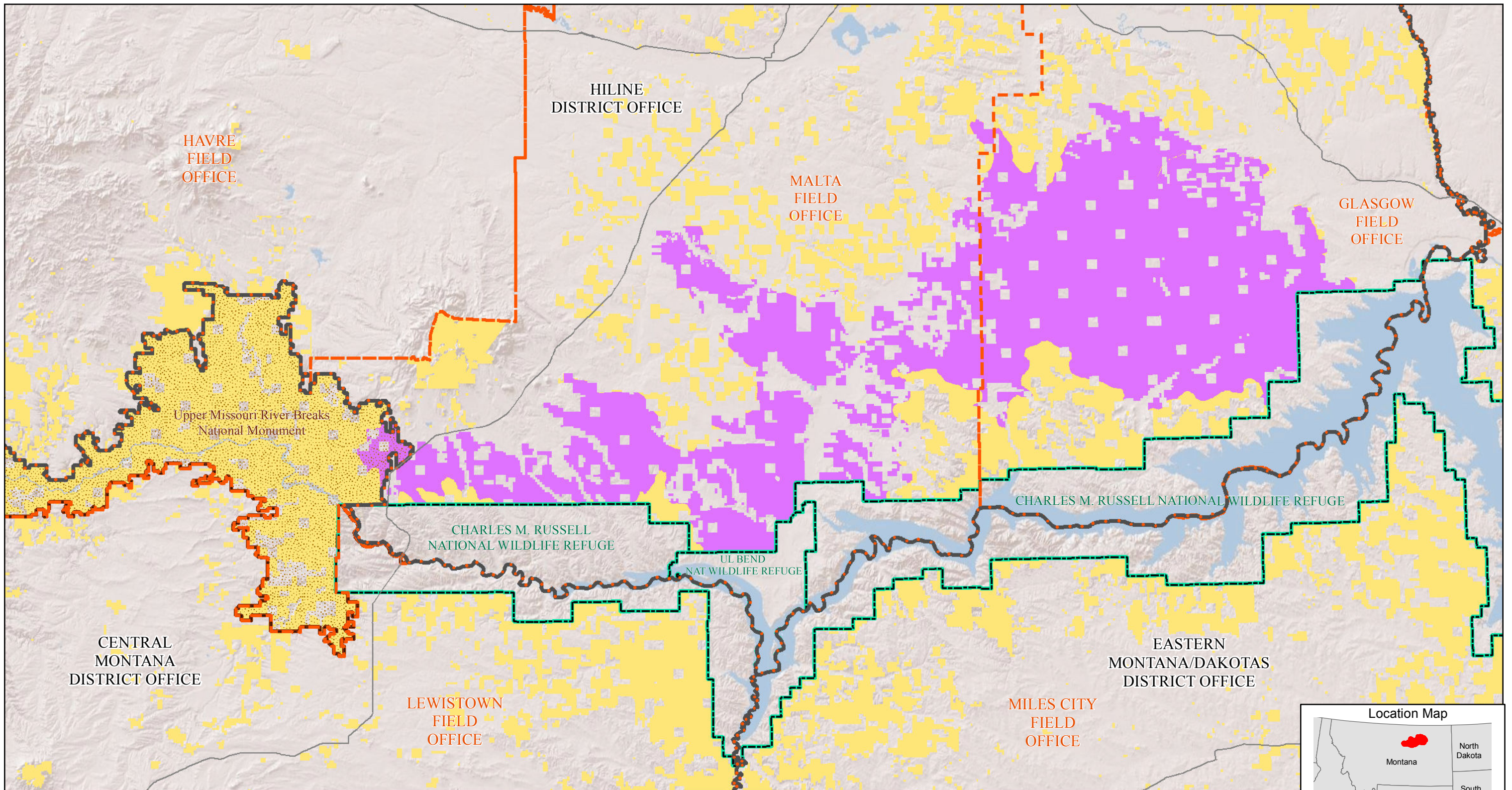
Matthew Magaletti
Rocky Mountain Region Sage Grouse Coordinator (Acting)
Bureau of Land Management
(307) 775-6329

--

Pat Deibert, PhD

Certified Wildlife Biologist®
U.S. Fish and Wildlife Service
5353 Yellowstone Road, Suite 308A
Cheyenne, WY 82009
307-772-2374, ext. 226

got leks?

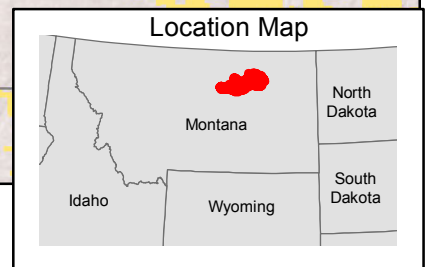
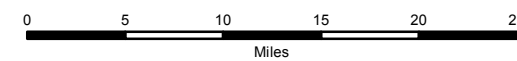


**North Central Montana
Greater Sage-Grouse
Preliminary Sagebrush
Focus Areas
BLM Managed Lands
-December 2014-**

Legend

- Sagebrush Focus Areas
- BLM Managed Lands
- FWS Wildlife Refuge
- National Monument
- BLM District Office Boundary
- BLM Field Office Boundary

Data Sources:
PPH: FINAL DRAFT: Developed by Montana Fish, Wildlife and Parks and reviewed by Montana BLM;
PGH: FINAL DRAFT: Distribution of Sage-Grouse in North America. Schroeder et al., 2004.
FWS AREAS OF SIGNIFICANCE: Data provided by FWS accompanying Memorandum FWS/AES/058711 (10/27/2014).



No warranty is made by the BLM as to the accuracy, reliability, or completeness of this data for individual use or aggregate use with other data.